



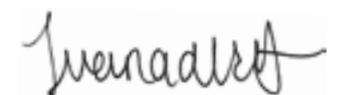
CATALOGUE
2025

BaïSB
CUT FLOWERS

Since 1905 Ball Company has been working to color the world with flowers and since 1992, Ball SB also joined this ideal to Color the World with diversity in cutflowers. Our focus is to work with you to be able to deliver exciting products from our growers to millions of people. But, more than products, we are delivering emotions. Flowers are much more than a plant. They are living organisms reserved and used to express happiness, gratitude, love, excitement. They are present in peoples' most important days and occasions such as weddings, religious ceremonies, festivities, carnivals, love declarations, birthdays and much more. This is because flowers help us express emotions without even saying them, they remind us of the important things in life, they bring joy to people with just looking at them, and they brighten any room. Flowers help us tell stories, they reduce stress levels, they awake most of our senses: sight, smell and touch, and they lift up our moods.

Thank you for helping us to spread emotions around the world,

What are flowers to you?



Juana de la Torre,
Cut flowers Director

I N D E X

TISSUE CULTURE -----	5
- Alstroemeria -----	6
- Delphinium -----	8
- Limonium -----	12
CUTTINGS -----	18
- Chrysanthemum -----	20
- Dahlia -----	26
- Dianthus -----	28
- Gypsophila -----	32
- Hydrangea -----	36
SEEDS & PLUGS -----	38
- Ammi majus -----	40
- Anemone -----	42
- Aster Callistephus -----	44
- Bupleurum -----	50
- Campanula -----	52
- Carthamus -----	56
- Craspedia -----	58
- Delphinium -----	60
- Dianthus -----	64
- Dusty Miller -----	68
- Flowering Kale -----	72
- Godetia -----	80
- Lisianthus -----	82
- Marigold -----	86
- Matricaria -----	90
- Moluccella -----	92
- Snapdragon -----	94
- Stock -----	100
- Sunflower -----	114
- Trachelium -----	128
- Tweedia Caerulea -----	130
BULBS -----	132
- Lilies -----	134
TABLE OF SPECIFICATIONS -----	138



TISSUE CULTURE

Plant Tissue Culture is a plant in which its cells and tissues have been propagated in a sterile media to produce genetically identical plants. This technique is used with various objectives: seed germination, vegetative multiplication, breeding virus free plants, hybrid breeding, etc. It also has various advantages such as: convenience in the clone propagation, selection and maintenance, combinations of one or more genotypes of an specific plant, guarantees health status, and the ability to create new plants through unrelated families.

Alstroemeria

Alstroemeria is a symbol of something very important, lasting friendship. Each flower has six petals and each petal is a symbol of one of the most important facets of friendship: patience, understanding, commitment, respect, humor and empathy.

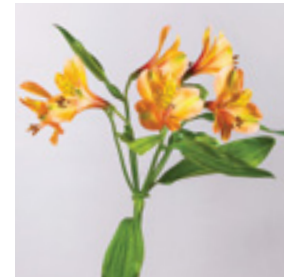


ALSTROEMERIA BY BALL

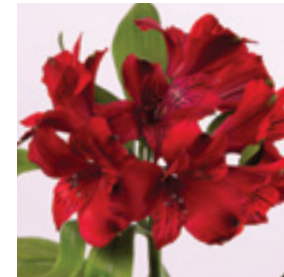
- Big Flower with thick stems
- Long lasting vase life
- Hard foliage in vase
- Color stability
- High productivity



AMANCAY TANGARINE



AMANCAY RED
214641-014



AMANCAY LYCHEE
216635-004



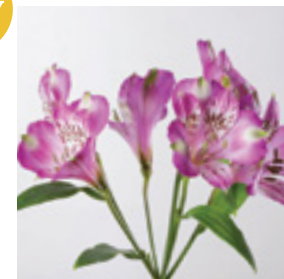
new

AMANCAY FRUIT DRAGON
216301-002



new

AURA LAVENDER



LUCCA



Stem Height: 70 cm
Crop Time: 20 weeks to start production
Planting Density: 3.2 plants/m²

Delphinium

Delphinium, a word derived from the Greek word for “dolphin”, was named after its bloom’s shape which looks like a leaping dolphin when seen from its side. The tall, vertical delphiniums are always aiming high; this is why they are widely associated with success and achievement. One of the only true blue flowers brings us back to the ocean, making them soothing, but also powerful and strong.



SUNSHINE SERIES

- Desired variety not only because of strong, tall, sturdy stems and big strong, true blue single florets but also because of its spray habitat and flowers that open all on top – hence, it is a perfect for bouquets
- A tissue-culture breeding breakthrough, it is highly programmable and provides very uniform blooming
- A novelty choice for commercial cut-flower growers and consumers – provides a true blue element to flower arrangements



Stem Height: 60 cm
 Crop Time: 12 weeks from planting to harvest
 9-10 weeks from prune to harvest
 Planting Density: 10-12 plants/m² net (2-2.25 plants/ft² net)

WALTZ SERIES

- The Delphinium Waltz series is the commercial variety known all over due to its full flowered spike with richly true blue colored, shatterless flowers
- Single flower with strong vibrant blue colors that makes the variety unique
- This series features tall, strong and sturdy stems with evenly situated flowers
- Highly programmable when pruned
- Very versatile plant. You can get very tall thick stems doing stem selection in the field, or thinner and smaller spikes for the bouquet market



SEA WALTZ

SKY WALTZ



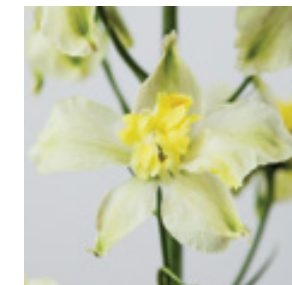
Stem Height: 100 cm
 Crop Time: 10 weeks from planting to harvest
 9 weeks from prune to harvest
 Planting Density: 10 plants/m² net

TRICK SERIES

- Delphinium Belladonna Trick series is a perfect variety to show you are a leader in flower trends
- Highly productive variety since new shoots continuously develop
- The size of flower spikes is not as robust as the commercial belladonna types making it perfect for mixed bouquets or CB's
- Unique colors never seen in Delphinium plants before such as yellow and pink
- Unique flower that resembles Orchids, giving a wild look to arrangements

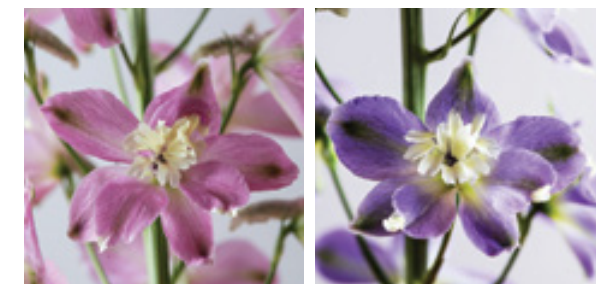


YELLOW



PINK

LAVENDER



Stem Height: 60 cm
 Crop Time: 9 weeks from planting to harvest
 8 weeks from prune to harvest
 Planting Density: 12 plants/m² net (2.3 plants/ft² net)

Limonium

Limonium, comes from the Greek word "meadow" that refers to its original habitat. Limonium originally grew in meadows along the sea in the Mediterranean. This flower brings to our homes the fresh feeling of being warm and relaxed in a breeze meadow in the Mediterranean. Limonium symbolizes remembrance, success, sympathy and beauty.



PERENNIAL SERIES SILVER PINK

- This new series is fresh, essential and back in fashion for bouquets, corsages, and flower arrangements
- The light pink color brings delicacy and elegance to flower arrangement and is very much in style
- Very productive and hardy plant compared to its competitors
- The calyx and flowers are firmly located in the stems, preventing them from shattering



SAF Outstanding Varieties Competition 2016

Red Ribbon Limonium Flowers

Stem Height: 80 cm

Crop Time: 26 weeks from planting to harvest

Planting Density: 6 Plants/m² net (1 plant/ft²) spaced in a quincunx pattern with 40cm between each line.

PERENNIAL SERIES SHOOTING STAR

- Limoniums are great fillers for bouquet arrangements. The plant structure create branches that give a lot of volume with just one stem
- The bright purple color brings life to this plant
- Very hardy and productive plant that is more resistant to pest an diseases than its competitors



SAF Outstanding Varieties Competition 2022
Blue Ribbon Other Cut Flowers

Stem Height: 80 cm
 Crop Time: 26 weeks from planting to harvest
 Planting Density: 6 Plants/m² net (1 plant/ft²) spaced in a quincunx pattern with 40cm between each line.

PERENNIAL SERIES SKYLIGHT

- The first true odorless hybrid Limonium in the market
- One of the most productive plants of its type
- Very hardy and resistant to pest and diseases
- Low mortality rate
- Soft purple color that is in demand



SKYLIGHT



SAF Outstanding Varieties Competition 2019
Red Ribbon Other Cut Flowers

Filler Proflorea 2019
2nd Place

Stem Height: 80 cm
 Crop Time: 26 weeks from planting to harvest
 Planting Density: 6 Plants/m² net (1 plant/ft²) spaced in a quincunx pattern with 40cm between each line.

SINENSIS SERIES

- Specifically selected for absence of fragrance, high-quality and strong stems, bright flower colors, high productivity, and multiple flushes
- Suitable for bouquets and solid bunches
- The long-lasting snow-white and yellow Limonium is perfect for tinting



Stem Height: 80 cm
 Crop Time: 16 weeks from planting to harvest
 production starts every 14 weeks
 Planting Density: 6 Plants/m² net (1 plant/ft²) spaced
 in a quincunx pattern with 40cm between each line

SINZII SERIES

- A result of crossing Limonium Sinuatum with Limonium Perezii to combine the virtues of both varieties - sharp, solid colors and big panicles
- Stems grow completely flat, making them easy to pack but giving great volume when crisscrossed
- Suitable for bouquets and solid bunches – can be dried with color intact for a long period of time
- Plants are hardy and productive, producing high-quality strong stems.



Stem Height: 90 cm
 Crop Time: 16 weeks from planting to harvest
 Planting Density: 6 plants/m² net

CUTTINGS

■

Cuttings are asexually propagated plants used for identical genotype plant production. Our highly trained personnel specializes in selecting the highest quality cuttings that yield only the best plants, certified to be free of plagues, virus and pathogens. The advantages of this propagation technique are high-quality materials, homogeneous plant behavior and reduced plant loss during planting. Ball SB can provide either rooted or unrooted cuttings based on customer preference.



Chrysanthemum

Chrysanthemum, commonly referred as mums, was named after the Greek word chrysos, meaning gold, and anthemon, meaning flower = Golden flower.

The Chrysanthemum is the flower for the month for November and it has a wide variety of meanings across the globe. Our favorite is the Asian meaning that signifies life and rebirth making them great gifts for birthday and babyshowers.

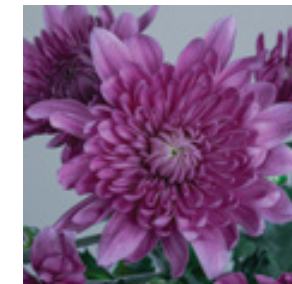


CUSHION

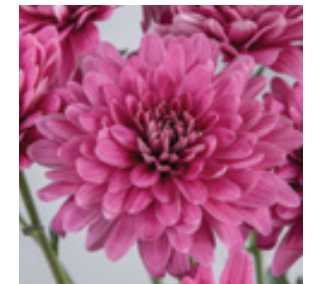
- Quick varieties with cycles lower than 70 days
- Unique colors and shapes
- Good foliage color
- Travel well in containers



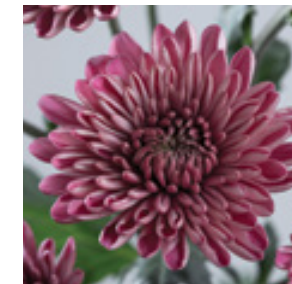
BERRY TOUCH



BITO



TERRANTIQUE



SARAH'S BRUSH



● Chrysanthemum Spray Proflora 2019
2nd Place

● SAF Outstanding Variety 2021
Blue Ribbon



DAISY TYPE

- Quick varieties with cycles lower than 70 days
- Good foliage color
- Adds color to break monotony
- Long vase life
- Perfect for solid bunches and bouquets



BENZ



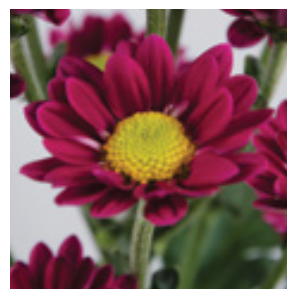
BUDÓ



BUTTER SCOTCH



COLORETTE



ECLIPSE



FLAMINGO IMPROVED



FAITH



GOLDEN BRUSH



HIBISCUS



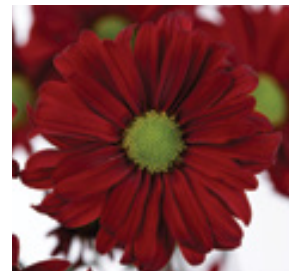
OREN



PERSIC



PHOENIX EAGLE



PINCTASTIC



SPEEDY YELLOW



VULCANO



NOVELTY & SANTINI

- Very uniform stems
- 15+ florets per stem



COROZO



ENDLESS AUTUMN



TERRACOTA



Dahlia

Dahlia species, native from Mexico, is considered one of the most beautiful flowers in the world. It has associated many meanings derived from its appearance but one of the strongest associations with the flower is: "Remaining graceful".

Her unique appearance and beauty reminds us of a beautiful woman who always keeps her standards and her morals at a high level. If Dahlia flower was a person, it would have royal manners and graceful nature. We can learn a lot from this flower and always keep our behavior under control no matter how hard it might seem to us. Staying graceful in life and respecting others is going to pay off to you in the future, and it will completely change the way others see you.



DAHLIAS

Types of Dahlias:

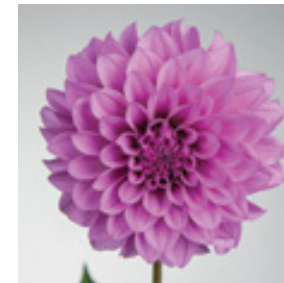
- Semi Cactus: Garnet, Pink Quartz, White Quartz
- Decorative: Moon Stone (Genie) Orange Stone and Red Stone.



new



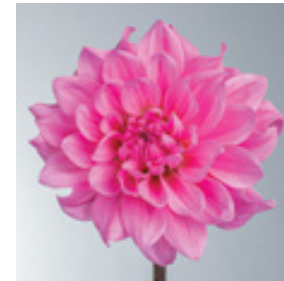
MOONSTONE/GENIE



WHITE QUARTZ



PINK QUARTZ



RED STONE



ORANGE QUARTZ



GARNET



Stem Height: 70-90 cm
Crop Time: 13 weeks from planting to harvest
Planting Density: 6 plants/m² net

Dianthus

One of the world's oldest cultivated flowers, the **Dianthus** is considered the "Flower of the Gods" or a divine flower. It symbolizes passion, fascination, admiration, affection, love and gratitude. Their versatility can result in a sweet, "chic" or delicate-looking arrangement, as well as a wild- looking bouquet coming out of the amazon jungle.



GREEN BALL®

- Non-flowering Dianthus that features green showy spikes of light green ball shaped flower
- The flower that the market has been asking for: different, focal and green
- Dark, glossy, long leaves on strong stems make it suitable for solid bunches
- Perfectly-round, green heads about 6 cm in diameter provide bouquets with a never-before-seen texture and look



Stem Height: 50-60 cm
 Crop Time: 18 weeks from planting to harvest
 Planting Density: 40 plants/m² net (3-4 plants/ft² net)

GREEN BALL® PUNKY

- New non-flowering Dianthus barbatus with big round steam heads, thicker stems and more vigorous plants.

new



● **SAF Outstanding Varieties Competition 2022**
Best In Class Cut Dianthus

■
Stem Height: 50-60 cm
Crop Time: 16 weeks from planting to harvest
Planting Density: 42 plants/m² net (3-4 plants/ft² net)



Gypsophila

Also known as baby's breath, **Gypsophila** was a big trendy flower in the 1990s that has come back in style. Its name comes from the word gypsum, a mineral present in the soil that makes a very heavy and thick ground. Gypsophila symbolizes long lasting or eternal love, and is present in many love binding ceremonies such as weddings and baptisms. The meaning comes from the pure white color of the flower because it can be an eternal flower when used dry. The white tiny flowers also show the purity of emotions that people should have for each other. Following this line, Gypsophila reminds us to stay dedicated to your cause and to remember the power of innocence and purity.

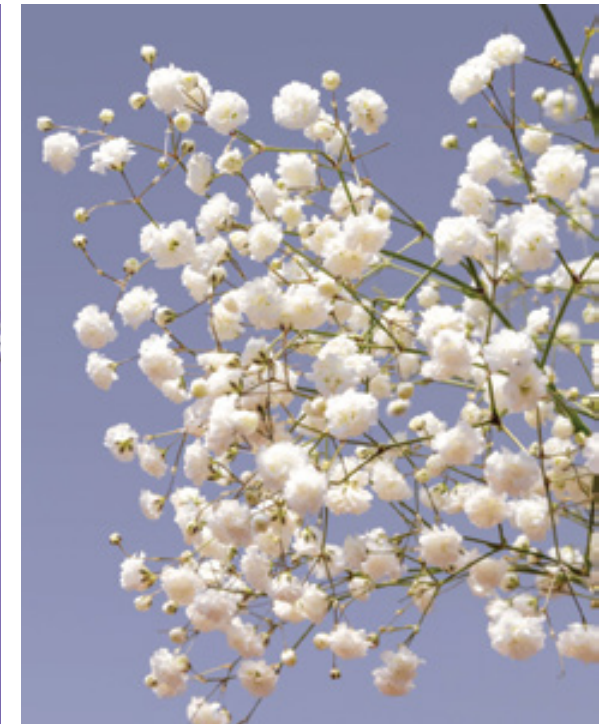
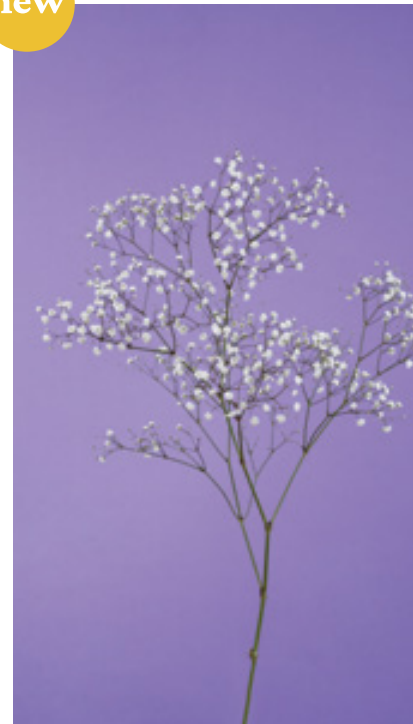


POLAR BEAR

- Large flower: +11mm
- Very white
- Easy to harvest due to its lateral angles
- Requires less light
- Weight greater than +38 gr



new



Stem Height: 80 cm
 Crop Time: 15 - 16 weeks from planting to harvest
 Harvest span: 3-4 weeks

SNOW BALL

- Large flowered gypsophila 10 mm
- This new generation of Gypsophila was bred with sustainability in mind – just like our Gypsophila Mirabella, these new varieties do not require additional lighting, reducing energy usage
- Very strong after pruning



Stem Height: 80 cm
 Crop Time: 17-18 weeks from planting to harvest.
 Harvest span: 3-4 weeks
 Planting Density: 6 Plants/m² net. Plants are spaced in a quincunx pattern with 40 cms between plants.

MIRABELLA

- Favorite medium size flower Gypsophila
- Similar to the Snowball, Mirabella does not require additional lighting to flower
- Has an upright plant structure with long internodes to prevent tangling, reducing loss of flowers in packing
- Very hardy plant low mortality rates



Stem Height: 80 cm
 Crop time: 18-19 weeks from prune to harvest
 Harvest span: 3-4 weeks
 Planting Density: 6 planta/m² net. Plants are spaced in a quincunx pattern with 40 cms between plants.

Hydrangea

The word **Hydrangea** comes from the Greek “Hydor”, meaning water and “angos” meaning vessels. According to a Japanese legend, **Hydrangeas** are associated with heartfelt emotions, gratitude for understanding and apology as an emperor gave them to the family of the girl he loved to make up for neglecting her.

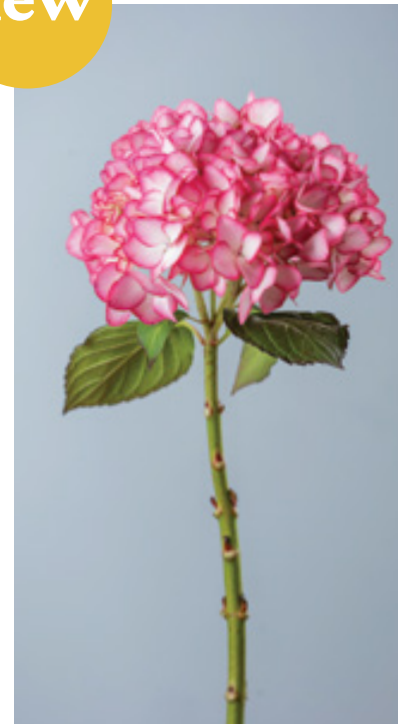


DANCING ANGEL

- New look Hydrangeas!
- Novelty colors.
- No color change with pH.
- Bi-colored petals and leaves add value to hydrangea



new



Stem Height: 60 cm
 Crop Time: 52 weeks
 Planting Density: 4.5 Plants/m² net.



SEEDS & PLUGS

Seeds, the beginning of the journey: wild cells at the brink of creation. Encapsulated in the tiniest form is all the diversity offered by Ball to bring beauty and emotions to millions of people and to color the world with our genetics.

Plugs/Young plants grow in single units in modular trays, this allows for minimum root disturbance when planting. They are a ready to plant unit, having been professionally nurtured through propagation & early growth stages.



Ammi majus

Originally from Egypt and has managed to spread throughout the Mediterranean Sea basin, and later around the world. Ammi comes from the Greek word that means "sand" and that refers to the habitat of the plant and Majus that means with "long petals".



WHITE LACE FLOWER



Stem Height: 80 cm
Crop Time: 12-13 semanas de siembra a cosecha
Planting Density: 12 plantas/m²

Anemone

Anemone, also known as Poppy Anemone, comes from the Greek word that means “the wind’s daughter”. This flower grown mainly in spring is associated with the arrival of spring breezes, transporting you to the warmth and happiness that comes when seasons change from the cold winter to the warm, colorful and breezy spring.



MONA LISA SERIES

- One of the only Anemone seed varieties
- Easy and programmable
- Perfect for current soft and elegant trends



Stem Height: 45 cm
 Crop Time: 12 weeks from planting to harvest
 Planting Density: 22-44 plants/m² net (2-4 plants/ft² net)

Aster Callistephus

Aster, that comes from the Greek word “star” describing its star-like shape, has grown in the wild since ancient times. Legends tell that they were created from the stardust tears of the Greek goddess Astrea, who cried after a flood that destroyed the beautiful nature. But the dried tears sprung into Asters, bringing beauty back to the land.



BONITA SERIES

- Medium size Aster with fully double pompon that colors completely
- Flowers held at a perfect angle for maximum impact
- Wide range of colors to fit every style and season



WHITE



ADDITIONAL COLORS: Blue, Light Blue, Pink, Rose, Scarlet.

Stem Height: 75 cm
 Crop Time: 13-14 weeks from planting to harvest
 Planting Density: 80 plants/m² net (7 plants/ft² net)

HANA SERIES



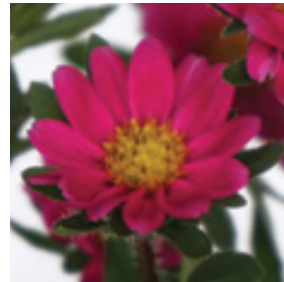
- Small size single petal Aster. Flower diameter is about 3.5 cm
- Very nice contrast between the bright yellow center and flower petals
- Hana has become a favorite in the growing bouquet business because more branches require less stems to fill a bouquet



WHITE



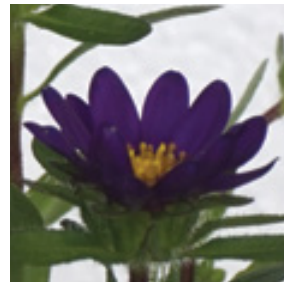
DEEP ROSE



PURE ROSE



PURPLE



ADDITIONAL COLORS: Scarlet, Pink.

Stem Height: 75 cm
 Crop Time: 14-15 weeks from planting to harvest
 Planting Density: 70 plants/m² net (6 plants/ft² net)

FUJIMI SERIES / MOTO



- Medium sized Aster, which is more resistant to fusarium than other Asters
- Comes in Coral, the pantone of the year
- Bred to grow upright before branching and can be planted in higher density than other asters



PURPLE



SCARLET



Stem Height: 75 cm
 Crop Time: 12-13 weeks from planting to harvest
 Planting Density: 80 plants/m² net (7 plants/ft² net)

JULIE SERIES



- Similar to Matsumoto, this versatile new series provides the vintage and cottage look so much in fashion
- Used year-round
- The spray or disbud stems and the medium flower heads combine all the characteristics needed in a bouquet for a 'focal' (when disbudded) or a 'filler' (when grown as spray)

PURPLE



SCARLET



WHITE



BLUE



PINK



ROSE



Stem Height: 60 cm
 Crop Time: 11-12 weeks from planting to harvest
 Planting Density: 80 plants/m² net (7 plants/ft² net)

MATSUMOTO SERIES

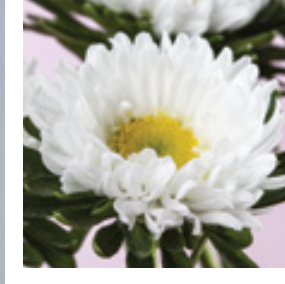


- The spray stem and small to medium flower heads make for a great filler in a bouquet
- Fusarium resistant
- A favorite in the growing bouquet business due to its long vase life and strong and solid colors

BLUE



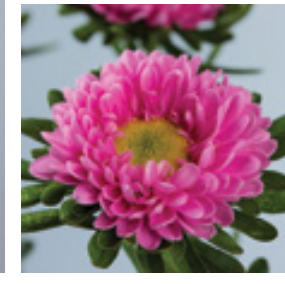
WHITE



YELLOW



PINK



SCARLET



ADDITIONAL COLORS: Blue Tipped White, Light Blue, Red, Rose, Apricot.

Stem Height: 60 cm
 Crop Time: 12-13 weeks from planting to harvest
 Planting Density: 80 plants/m² net (7 plants/ft² net)

Bupleurum

Bupleurum comes from the latin bupleurum hare's ear. It is a genus of widely distributed herbs having simple often stem-clasping leaves and greenish yellow flowers. It is an ornamental plant with delicate yellow flowers and sickle shaped leaves.



GRIFITI SERIES

- Produces many small yellow flowers over foliage similar to eucalyptus.



Stem Height: 91 cm
 Crop Time: 14-15 weeks from planting to harvest
 Harvest Span: 3 weeks
 Planting Density: 66 plants/m² net

Campanula

Campanula represents gratitude, humility, attractiveness and everlasting love, making them perfect for a gift for someone special. The name comes from the Latin word meaning "Bell", and the story says that it was created when Venus' magic mirror, which showed beauty in anyone who looked into it, shattered into pieces and later the pieces bloomed into the beautiful Campanulas.



CAMPANA SERIES

- Large flower heads with strong stems, have good foliage and are 100% top-flowered
- Perfect filler that gives an elegant, delicate and feminine look to arrangements
- Uniform plants with short harvest window
- **Pink Improved:** Faster cycle. Stem structure with more flowers opening at the top.

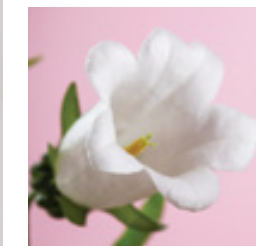


PINK IMPROVED

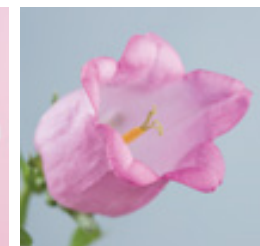


new

WHITE



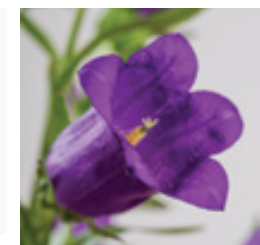
PINK



LILAC



DEEP BLUE IMPROVED



Stem Height: 76 cm
 Crop Time: 12-13 weeks from planting to harvest
 Planting Density: 64 plants/m² net (6 plants/ft² net)

CHAMPION II SERIES

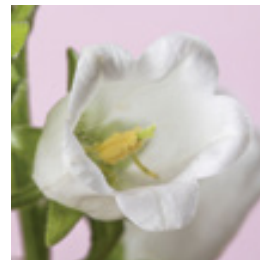
- Large flower head Campanula with high germination rate compared to other varieties
- The Champion series also have a delicate and elegant look but are very strong and come in a variety of colors
- Annual blooming habit – only requires day length manipulation and moderate growing temperatures



DEEP BLUE



WHITE



LILAC



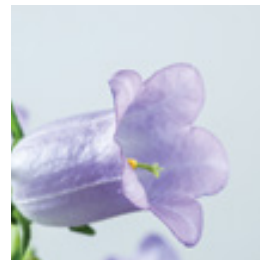
PINK



ROSE



CHAMPION LAVENDER



Stem Height: 64-84 cm
 Crop Time: 12-13 weeks from planting to harvest
 Planting Density: 64 plants/m² net (6 plants/ft² net)



Carthamus

Carthamus, also known as Safflower, is a wild looking flower with little spikes, that gives a savage and fun look to arrangements. It was used to find new love or marriage when given as a gift. They are also associated with good luck and joy.



CARTHAMUS SERIES

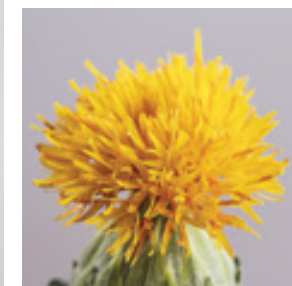
- Uniform stem length across the series
- Excellent for fresh and dried use
- Can also be used green when harvested young
- Useful for indoor and outdoor professional cut flower production programs



GRENADE



ZANZIBAR



CARTHAMUS CERRADO



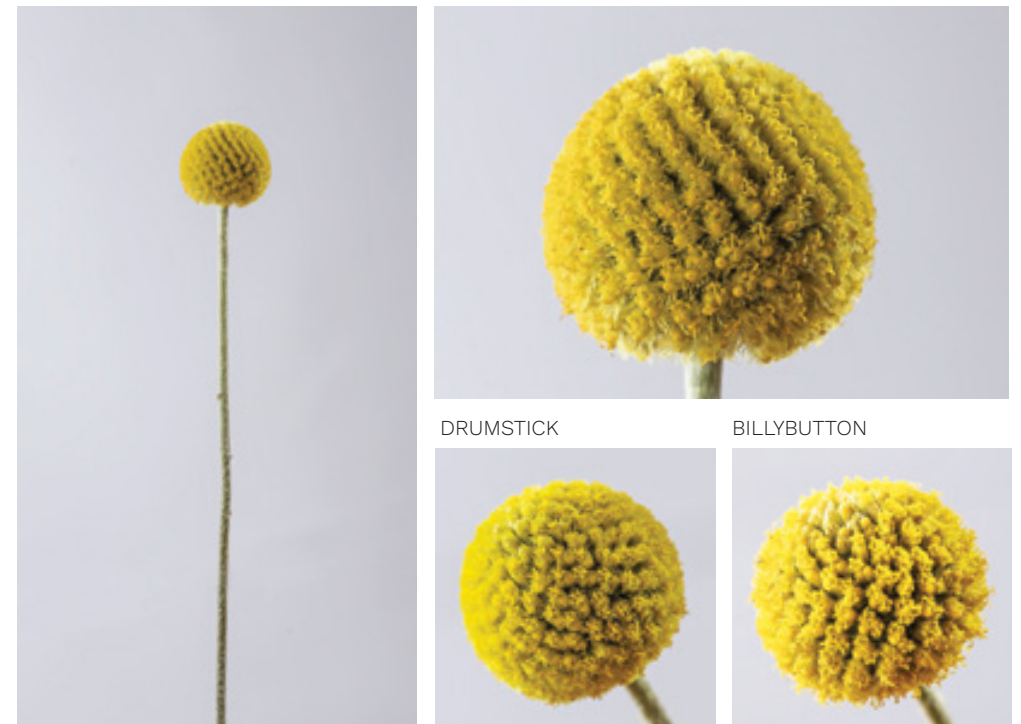
Stem Height: 81 cm
 Crop Time: 16 weeks from planting to harvest
 Planting Density: 80 plants/m² net

Craspedia

Native to New Zealand, Australia and Tasmania. The name comes from the Greek word "Kraspedon" meaning "edging" which is a referral to the silver and feathery foliage that grows at the beginning of the stems. **Craspedia** stands symbol for good health.

CRASPEDIA GLOBOSA

- Bright yellow ball on a long and strong stem.
- Year round available
- Great for tinting
- Can be dried and will keep the color intact for a long period of time



Stem Height: 90 cm
 Crop Time: 14 weeks from planting to harvest
 Planting Density: 21 plants/m² net

Delphinium

Delphinium, a word derived from the Greek word for “dolphin”, was named after its bloom’s shape which looks like a leaping dolphin when seen from its side. The tall, vertical delphiniums are always aiming high; this is why they are widely associated with success and achievement. One of the only true blue flowers brings us back to the ocean, making them soothing, but also powerful and strong.



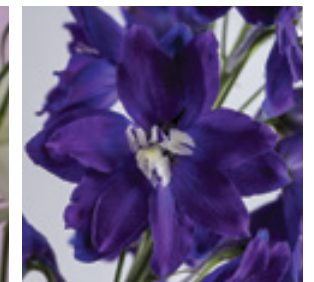
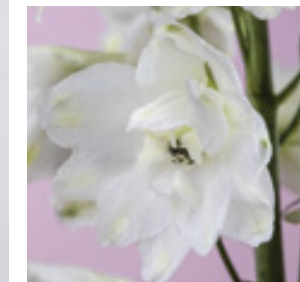
ARIEL SERIES

- Double flower delphinium that comes in two colors: Magic violet and white
- A seed-breeding breakthrough because it is programmable and provides very uniform blooming within each variety
- Reliable, easy to program, and easy to sell



WHITE IMPROVED

MAGIC VIOLET



● **SAF Outstanding Varieties Competition 2019**
Red Ribbon Other Cut Flowers

Stem Height: 75 cm
Crop Time: 11 weeks from planting to harvest
10 weeks from prune to harvest
Planting Density: 12-14 plants/m² net (2 plants/ft² net)

GUARDIAN SERIES

- Very uniform blooming, making it easier to harvest
- Features double flower blooms that have unique colors excelling over other commercial varieties.
- An essential choice for commercial cut flower growers as well as consumers: it provides a vertical element to flower arrangements, and its 3-color assortment makes for great solid bunches



WHITE



LAVENDER



BLUE



Stem Height: 75 cm
 Crop Time: 11 weeks from planting to harvest
 10 weeks from prune to harvest
 Planting Density: 12-14 plants/m² net (2 plants/ft² net)

TRITON SERIES

- Elatum delphinium, the Triton Series features stems with large spikes tightly packed with double blossoms
- Very productive variety compared to similar products
- Large spikes that show more open flowers when put in arrangements
- Excellent stem quality with good shaped double flowers closely arranged on cylinder shaped spikes
- Stands above the rest in uniformity, programmability and versatility and will change the way you grow Delphiniums



LIGHT BLUE



DARK BLUE



ADDITIONAL COLORS: Lavender.

Stem Height: 75 cm
 Crop Time: 12 weeks from planting to harvest
 11 weeks from prune to harvest
 Planting Density: 12-14 plants/m² net (2 plants/ft² net)

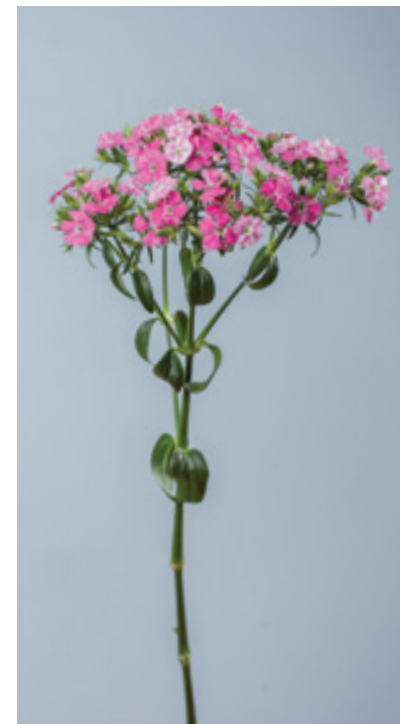
Dianthus

One of the world's oldest cultivated flowers, the **Dianthus** is considered the "Flower of the Gods" or a divine flower. It symbolizes passion, fascination, admiration, affection, love and gratitude. Their versatility can result in a sweet, "chic" or delicate-looking arrangement, as well as a wild- looking bouquet coming out of the amazon jungle.



AMAZON™ SERIES

- A programmable crop that can be produced all year round in cool climate conditions
- Performs as an exceptional filler in bouquets and, due to its strong quality stems and flowers, it makes a great solid bunch
- The shiny, glossy, very dark green leaves contrast with the neon color of the flowers
- Highly productive



ROSE MAGIC



LAVENDER MAGIC



new

NEON PURPLE



NEON CHERRY



Stem Height: 46-91 cm
 Crop Time: 15-16 weeks from planting to harvest
 Planting Density: 42 plants/m² net (3-4 plants/ft² net)

SWEET™ SERIES

- Offered in separate vibrant colors with no vernalization required
- Produces in each straight, long stem a very fragrant head packed with vibrant, lasting blooms and shiny leaves
- Focal flower that has a big impact presented in clusters and can also be used as a filler in bouquets
- Since it is a seed item and comes in a wide variety of colors, it is easy to program for peaks and different seasons



WHITE



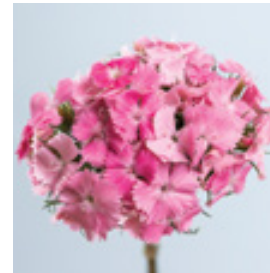
PINK MAGIC



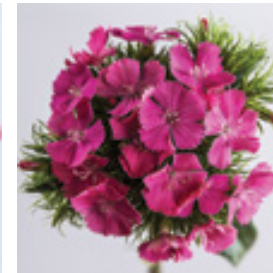
PURPLE WHITE BICOLOR



PINK



DEEP PINK MAXINE

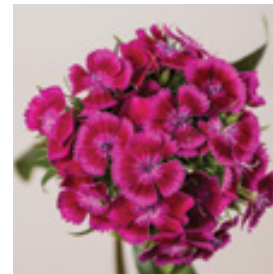


NEON PURPLE

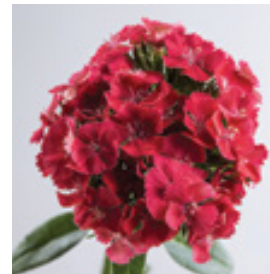


new

MAGENTA BICOLOR



CORAL



SCARLET



CHERRY

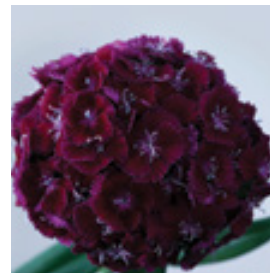


new

RED



PURPLE



BLACK CHERRY



ROSE MAGIC



new

Stem Height: 50-60 cm
 Crop Time: 13 weeks from planting to harvest
 Planting Density: 80 plants/m² net (3-4 plants/ft² net)

Dusty Miller

Dusty Miller was brought to the cut flower business from the gardens. It is a plant in the family Asteraceae and originates from the Island of Capraia in Italy, where it is called “fiordaliso delle scogliere” meaning cornflower of the cliffs. This bedding plant item has arrived to give our flower arrangements a garden look that is very much in fashion. Its silver color, that complements the pastel colors in the arrangements, symbolizes the moon and is commonly associated with elegance, prestige and wealth.

NEW LOOK

- One of the most productive and unique foliage plants around
- This special Dusty Miller features tall, thick stems with large, smooth-edged silver leaves
- The more you pick it, the more stems it produces
- Ready to cut in just four months from sowing – this hardworking plant will reward you with buckets and buckets of fuzzy silvery foliage all season long



Stem Height: 60-70 cm
 Crop Time: 20 weeks from planting to harvest
 Planting Density: 24 plants/m²

SILVER DUST

- Silver, serrated, feather-like, velvety leaves
- Perfect for use as filler or foliage in flower arrangements, separating bright colors or framing showy shrubs like roses
- Gives enough length to put in flower arrangements when cultivated with the right procedures



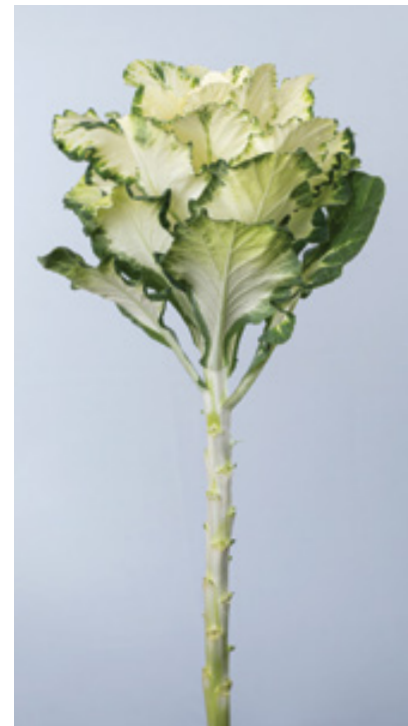
Stem Height: 60-70 cm
 Crop Time: 20 weeks from planting to harvest
 Planting Density: 24 plants/m²

Flowering Kale

From the kitchen to your vase, **Flowering Kales** give a rose-like shape to arrangements. Native to Europe, these cool weather plants grow a mounded rosette with color in their ruffled, feather leaves. It adds a splash of white or red to arrangements along with green accents.

FLARE SERIES

- Early maturing.
- In addition to being extremely uniform, it's very easy to get tall stems with this series.
- Flare White is well suited for dying.
- Flare's leaves have a gentle ruffle along their edges adding to their beauty.



WHITE

ROSE



Stem Height: 80-90 cm
 Crop Time: 14 weeks from planting to harvest
 Planting Density: 80 plants/m²

CRANE SERIES



- Flower size is adaptable by adjusting the density and water
- Tall upright habit with compact shiny leaves
- Perfect for adding the desired different touch to your bouquets
- Special Pinch to make them Rositas
- Crane Ruffle: More vigorous growth habit than the other Crane series



Stem Height: 70 cm
 Crop Time: 12 weeks from planting to harvest
 Planting Density: 80 plants/m² net (8 plants/ft² net)

EARLY WHITE



WHITE



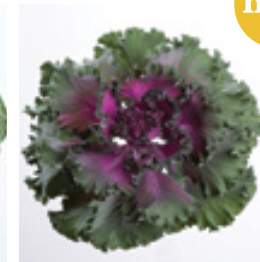
RED



EARLY ROSE



RUFFLE RED



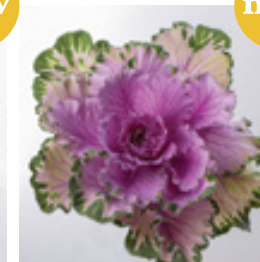
ROSE



RUFFLE WHITE



RUFFLE ROSE



CRANE FEATHER SERIES



- A different look in Brassicas, this series has very serrated leaves
- The first uniform feather leaf kale offers two distinct colors, excellent stem length for easy harvest and uniform habit
- Adds texture and interest to floral arrangements

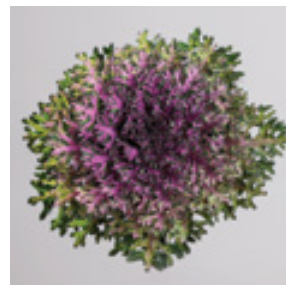
FEATHER SNOW

new



KING WHITE

QUEEN RED



Stem Height: 60 cm
 Crop Time: 12 weeks from planting to harvest
 Planting Density: 80 plants/m² net (8 plants/ft² net)

WHITE LADY SERIES



- Flowering Kale White Lady is very versatile focal flower – the green center with darker and shiny leaves provides a great contrast with z flowers
- Very white leaves with dark green thin line in the rim of the leaves gives this Flowering Kale a unique look

new



Stem Height: 62 cm
 Crop Time: 12 weeks from planting to harvest
 Planting Density: 80 plants/m² net (8 plants/ft² net)

DREAM SERIES

- The dark leaves that surround the center area enhance the center color for a great contrast
- The brightness of the flower color depends on production temperature (lower is better)
- The big advantage of the new Dream series, compared to existing commercial varieties, is that it fixes the color more intensively, and the heads are more compact, giving an overall nicer look
- Yields a thinner stem, better for shipment
- Special Pinch to make them Rositas



RED



WHITE



RED ROSITA



Stem Height: 70 cm
 Crop Time: 12 weeks from planting to harvest
 Planting Density: 80 plants/m² net (8 plants/ft² net)

FRINGED WHITE SERIES



Stem Height: 70 cm
 Crop Time: 14 weeks from planting to harvest
 Planting Density: 80 plants/m² net (8 plants/ft² net)

Godetia

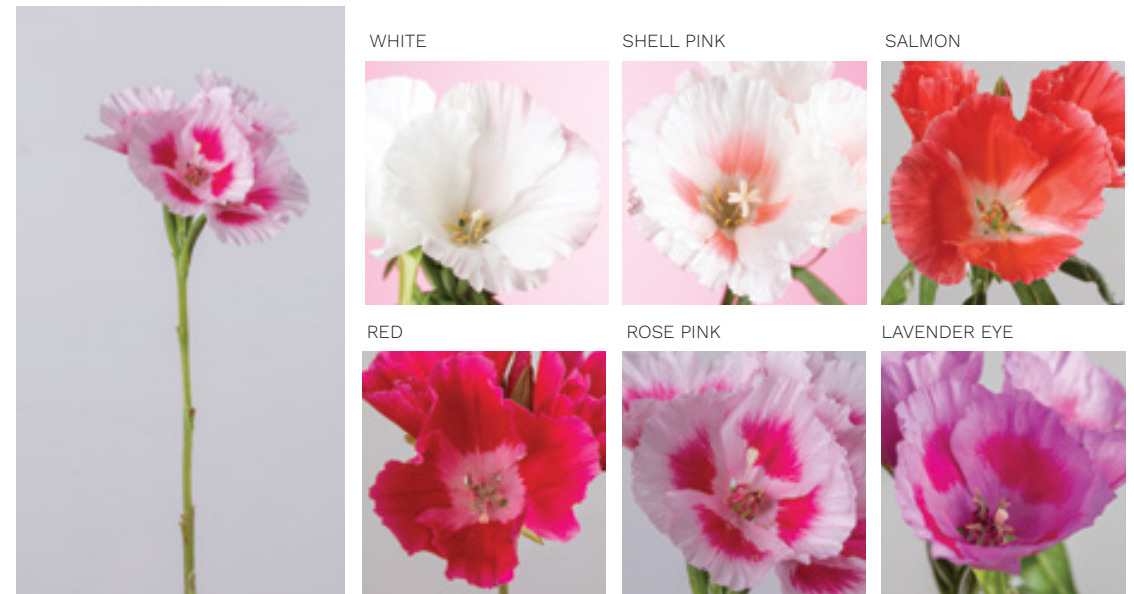
Godetia also goes by the names Farewell-To-Spring and Clarkia, the latter honoring Captain Clark of the Lewis and Clark expeditions as the story tells that they discovered the flower in the west coast, especially in California although Godetia's can be found all over North and South America.

Godetia stands for fascination, sincerity and love flower.



GRACE SERIES

- Lateral branching produces up to 15 stems, carrying 5 or 6 solid clusters of blooms
- Suitable for high-density packing and shipping over long distances



ADDITIONAL COLORS: Lavender, Pink.

Stem Height: 60-75 cm
 Crop Time: 16 weeks from planting to harvest
 Planting Density: 28 plants/m²

Lisianthus

Lisianthus, native to dry areas, also called the “rose of the South”, come from the humble origins of the South American meadows, however, bouquets containing Lisianthus are not humble at all. This high profile and elegant looking flower requires specific conditions to germinate and grow, but it comes out to be a hardy and strong plant, which symbolizes to rise above your surroundings and to be grateful. Lisianthus is becoming more and more popular due to its beautiful delicate appearance with strong stems and petals.

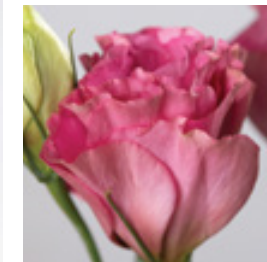


FLARE SERIES

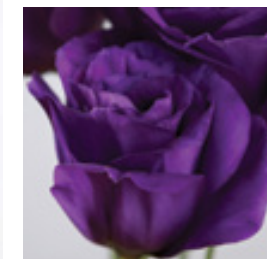
- Double-Flowered Lisianthus Flare displays an outstanding multi-flower form with high petal counts and bright strong solid colors on tall, strong stems
- Spray type Flare produces more flowers on the top of each stem that opens within a short window
- No pinching is needed to deliver top quality stems with multiple blooms on top, each resembling a bouquet
- With a very long vase life expectancy it is said that it “grows in” the flower arrangements as the buds keep opening while in the vases



DEEP ROSE



DEEP BLUE



JADE



new

WHITE



new

YELLOW



new

Stem Height: 80-90 cm
 Crop Time: 16-17 weeks from planting to harvest
 Planting Density: 64-84 plants/m² net (6-8 plants/ft² net)

ABC SERIES

- Double flower Lisianthus with high petal counts
- Uniform plants finish 1 to 2 weeks before competitive varieties and reduce sensitivity to rosetting
- Plugs finish 1 to 2 weeks faster than comparable varieties and produce uniform crops
- Lisianthus flowers are not Ethylene sensitive, therefore do not shatter and are easy to ship
- ABC series comes in types 1, 2 and 3, so its available to grow in different conditions and seasons



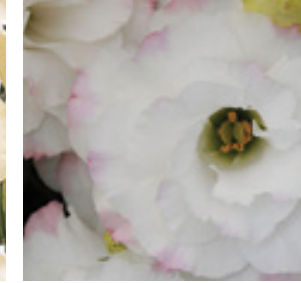
WHITE BLOOM



YELLOW



ROSE RIM BLOOM



GREEN BLOOM



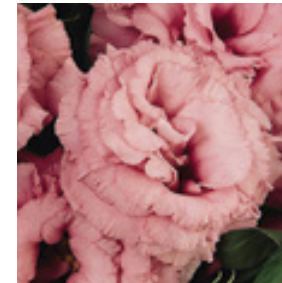
DEEP ROSE



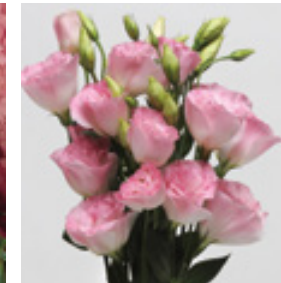
MISTY BLUE BLOOM



ROSE



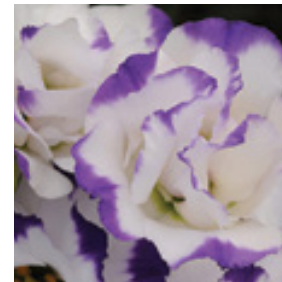
MISTY PINK



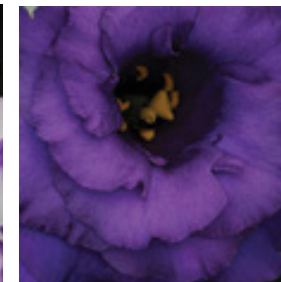
LAVENDER



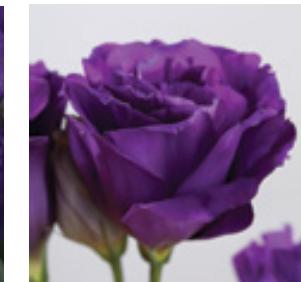
BLUE RIM BLOOM



BLUE BLOOM



PURPLE



Stem Height: 80-90 cm
 Crop Time: 14-16 weeks from planting to harvest
 Planting Density: 64-84 plants/m2 net (6-8 plants/ft2 net)

Marigold

Marigold has strong ties to the sun and its power to resurrect. Many considered it a symbol of despair and grief, linking it to the Mexican remembrance of the dead during “Día de Muertos”. It also has a more modern perspective focusing on the sunny colors bringing optimism and success.



MARIGOLD XOCHI SERIES

- Xochi delivers stronger stems and richer colors than other commercial varieties. Xochi means “flower” or “princess of flowers” and is a shortened version of Xochitl, an ancient Aztec word used in Spanish today, most commonly in Mexico. Xochi offers the uniformity, good shipability and durability to meet the increasing consumer demand for Día de los Muertos and Halloween celebrations; good for use in bouquets and grower bunches.
- Stronger peduncles than normal that will permit you to produce bigger heads that won't brake during shipping or when handled.
- Size and color are perfectly stable.



new



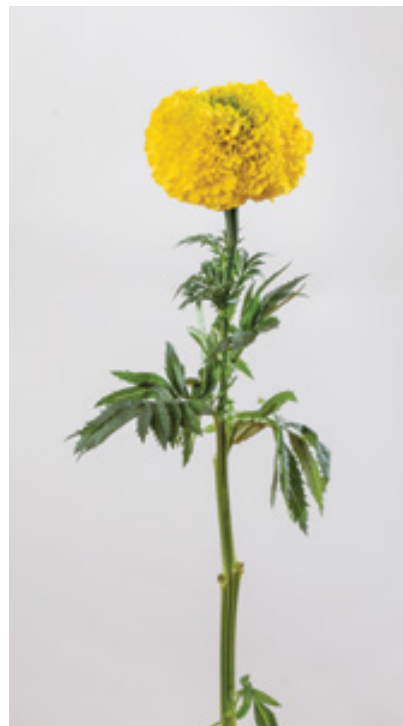
● **SAF Outstanding Varieties Competition 2021**
Red Ribbon Other Cut Flowers

● **Proflora 2019**
3rd place other categories

Stem length: 61-91 cm
Crop time: 11 weeks from planting to harvest
Plant density: 80-100 plants/m² net (7-9 plants/ft² net)

MARIGOLD COCO

- A vintage, colorful “day of the dead look”, especially trendy after James Bond and Disney Coco movies brought the marvelous festivities into world view.
- Perfect for summer and fall.
- Excellent focal flower due to its flower size and solid strong orange and yellow color.
- Presents a very round flower with a very inconspicuous green center.
- Very versatile flower provides a summer cottage look and offers bright, solid colors.



YELLOW



GOLD



ORANGE



Stem Height: 98 cm
 Crop Time: Production starts 11 weeks after planting with peak production in week 12
 Planting Density: 80-100 plants/m² net

Matricaria

The word comes from the modern latin “**Matricalis**” or “Matrix” womb. The word derives Patience, Attracts Wealth, Energy in Adversity and Healing.



VEGMO SERIES

- Excellent, fast year-round crop.
- Good post-harvest life.



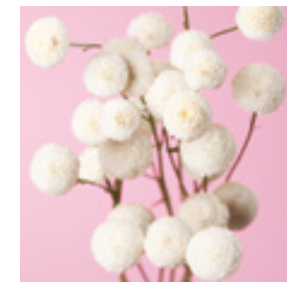
SINGLE



YELLOW



SNOWBALL EXTRA



SUNNY BALL



Stem Height: 71-91 cm

Crop time: 14-15 weeks from planting to harvest

Planting Density: 80 plants/m²

Molucella

Ironically, this variety that comes from Syria and Turkey, is called “**Bells of Ireland**” because of the vibrant chartreuse-green color of its spikes. Green is the color of the Irish and its also the color of good luck. For the superstitious, it is the flower to have around at home when you need a little bit of extra luck.



MOLUCCELLA / BELLS OF IRELAND

- Lightly scented plant that produces a gorgeous, green bract, which surrounds the rather inconspicuous flowers
- Molucella is a very versatile commercial flower - the spiky stems make an interesting and long-lasting fresh cutflower arrangement
- Can be use as a green vertical to give altitude to arrangements



Stem Height: 38-51 cm
 Crop Time: 14 weeks from planting to harvest
 Planting Density: 80 plants/m² net (7 plants/ft² net)

Snapdragon

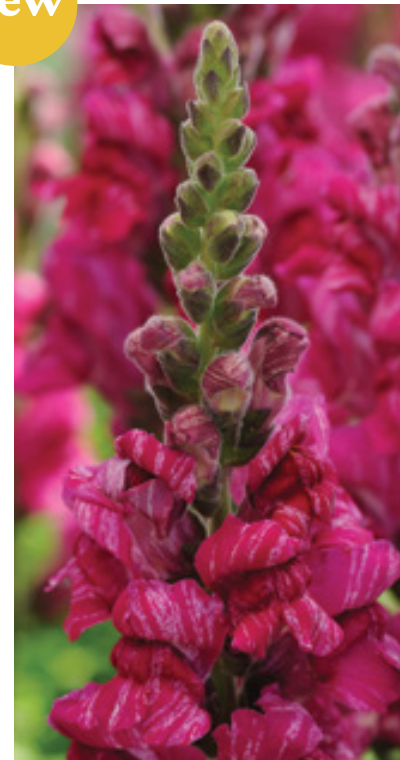
Snapdragon. This mystical flower resembles a Dragon's head when squeezed. As the character it resembles, the snaps are seen as graceful flowers but with inner strength and fire within. It can have two different meanings: graciousness and deception, and sometimes also seen as a charm against falsehood.

PURPLE TWIST

- Purple Twist is a novelty Snapdragon
- Ideal for group 1 and 2 production



new



Stem Height: 100-150 cm
 Crop Time: 12 weeks from planting to harvest
 Planting Density: 88 plants/m² net

POTOMAC™ SERIES

- Potomac series produces tall, strong, sturdy and clean stems, as well as long and well-defined spikes with good flower quality
- Well-suited for solid bunches and bouquets
- Outstanding colors and flower quality plus shatter resistance makes Potomac ideal for production during periods of high light, long days and warm temperatures (Group 3, 4)
- Can be grown year round



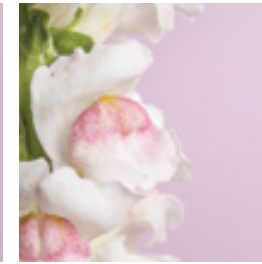
DEEP PINK



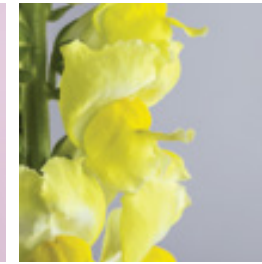
IVORY WHITE



APPLEBLOSSOM



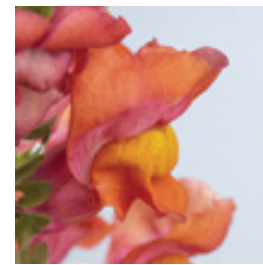
YELLOW



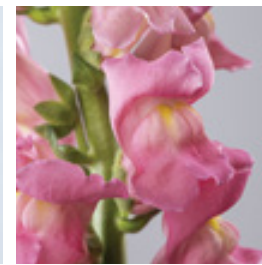
ORANGE



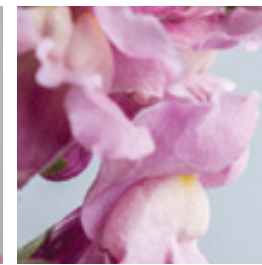
DARK ORANGE



PINK



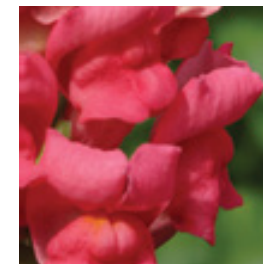
LAVENDER



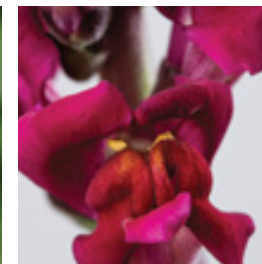
WHITE



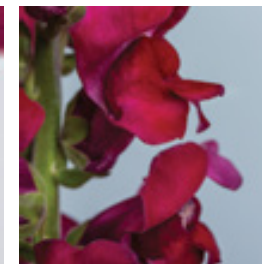
CHERRY ROSE



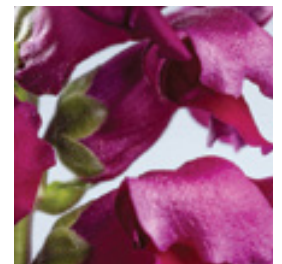
RED



CRIMSON



ROYAL



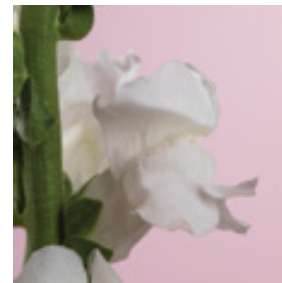
Stem Height: 100-150 cm
 Crop Time: 12 weeks from planting to harvest
 Planting Density: 88 plants/m² net

EARLY POTOMAC™ SERIES

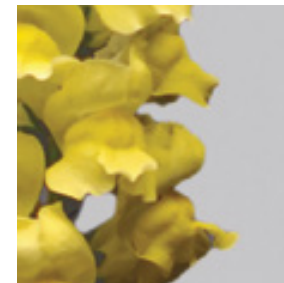
- Potomac series also comes with the early Potomac series - with all the same virtues, the early varieties are a type 3 for all but the warmest periods where other varieties should be used



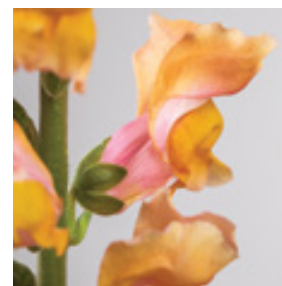
WHITE



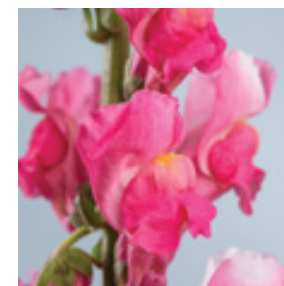
YELLOW



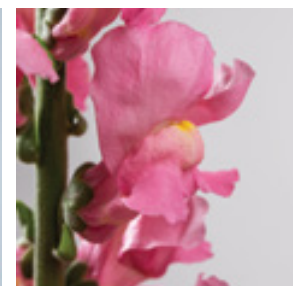
ORANGE



ROSE



PINK



Stem Height: 100-150 cm
 Crop Time: 10 weeks from planting to harvest
 Planting Density: 88 plants/m² net

Stock (Matthiola)

Stock, symbolizes enjoying life, even when its not exactly how you want it to be. It is seeing the beautiful in the ugly and silver lightning in the dark, so it can be used to celebrate anything that brings you happiness. It symbolizes eternal beauty as well, making them perfect for everyday flowers to lift up your mood. Their soft aroma gives a fresh atmosphere to your environment.

INFINITY SNOW SERIES

- Double appearance ratio is more or less 95% without select-out process. Easiest choice to reduce the labor costs, planting space and mental stress in the operation.
- Features nicely uniform and pure white dense spike with small and less curled leaves.



new



Stem Height: 60-70 cm
 Crop time: 10 weeks from planting to harvest
 Plant Density: 100 plants/m²

IRON & EARLY IRON SERIES

- Bred in Japan, the Iron Standard Stock has the strongest stem compared to competitors
- Very compact spike, which makes it look with fuller blossoms
- Comes in wide variety of solid, strong colors as well as pale pastel colors, so it fits all types of occasions
- Early Iron, flowers earlier than Iron series



Stem Height: 75 cm
 Crop Time: 10 weeks from planting to harvest
 Planting Density: 100 plants/m² net (12 plants/ft² net)

CHANTER SERIES

- Well branched spray typed stock with strong stems.
- Dense and nicely tapered form of spikes expected.
- Great accent items provides smell, volume and color to bouquets and flower arrangements.



ANTIQUE ROSE



LAVENDER



YELLOW



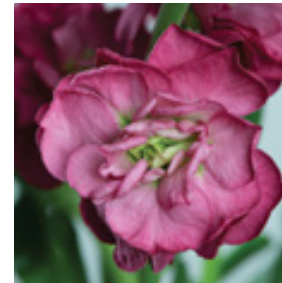
RED



PINK



ANTIQUE ROSE



PURPLE



BOURDEAUX



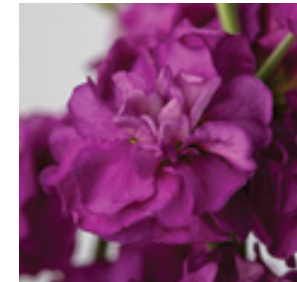
WHITE



APRICOT



GRAPE



PURE WHITE



CHERRY



BLUE



Stem Height: 70 cm
 Crop Time: 11 weeks from planting to harvest
 Planting Density: 88 plants/m² net

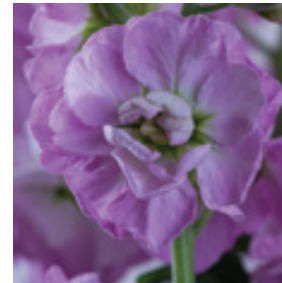
CHANTER CEDO, ALTO & AD



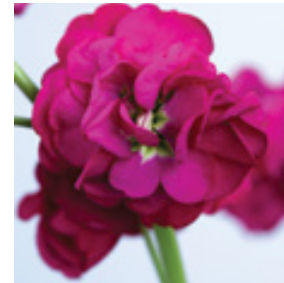
- Latest addition in the Murakami series.
- It combines all the desirable characteristics of the Stock Chanter sprays but with longer stems and/ or faster (depends on variety).
- Chanter Alto, taller stems than chanter series.
- Chanter Ad, Over 90% double-flowers.
- Chanter Cedo, earlier than chanter.



ALTO LIGHT PINK



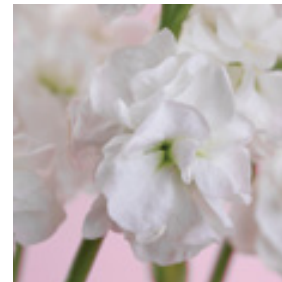
ALTO RED



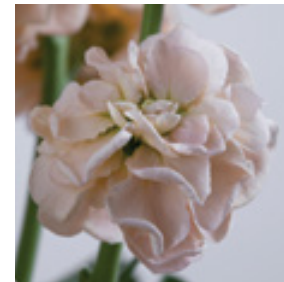
AD WHITE



CEDO WHITE



CEDO APRICOT



CEDO YELLOW



QUARTET SERIES

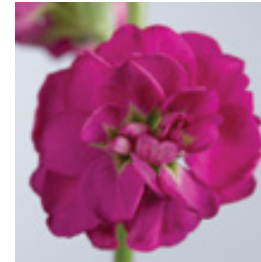
- Specifically bred to suit the bouquet market, since one stem can make a bouquet on its own
- New unique colors help you bring exceptional color pallets to your arrangements
- Still offers all the desirable characteristics of the standard stock



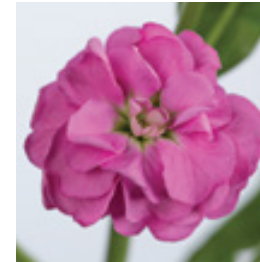
MARINE



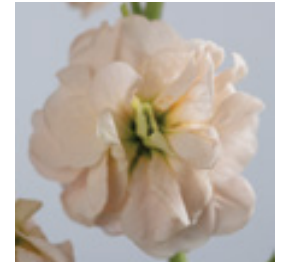
DEEP ROSE



ROSE



APRICOT



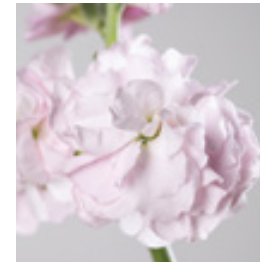
YELLOW II



RAINBOW



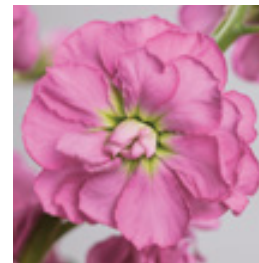
CHERRY



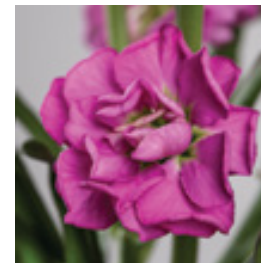
DEEP PINK BLUSH



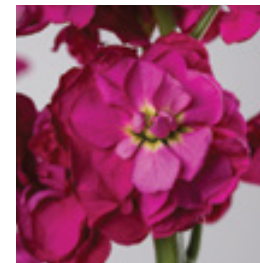
PINK



COOL PINK



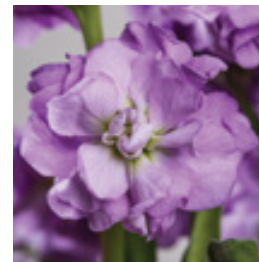
RED



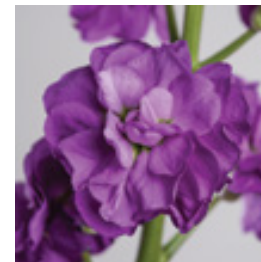
LIGHT PINK BLUSH



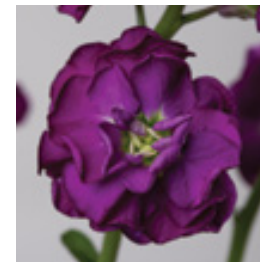
LAVENDER



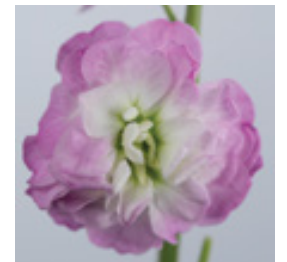
BLUE



PURPLE



PINK BLUSH



ADDITIONAL COLORS: Deep yellow, Blue Blush, Marine Blush, Sky Blush, Sunset, Peach, Fantasy, Lovely, Red Purple, and White.

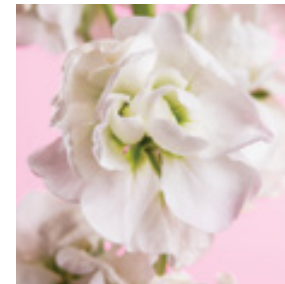
Stem Height: 60 cm
Crop Time: 11 weeks from planting to harvest
Planting Density: 88 plants/m² net

KATZ SERIES

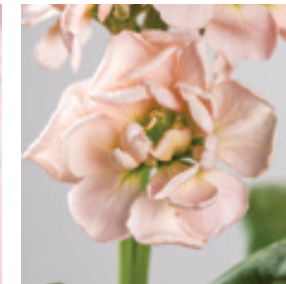
- The Stock Katz was named in memory of Mr. Philip Katz, who for many years promoted the Ball cut flower genetics
- This series combines all the desirable characteristics of the standard stock, such as sweet fragrance, bright and solid colors, plus an amazing full flower spike
- This full blooming spike makes it very desirable in flower arrangements, as well as in the growing bouquet business.
- NEW Katz Hi Double White provides greater than 90% yield of usable double-flowered stems, and this top-selling colour also has flower quality to match current Katz White



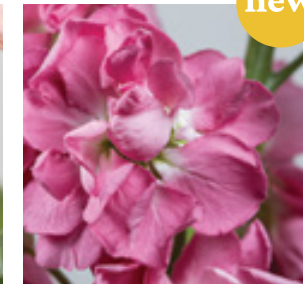
WHITE



APRICOT



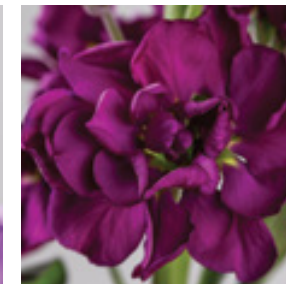
ANTIQUÉ ROSE



LAVENDER BLUE



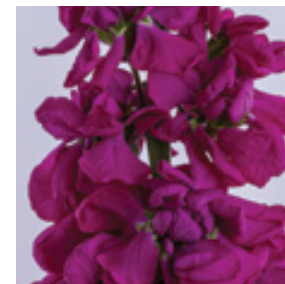
PURPLE



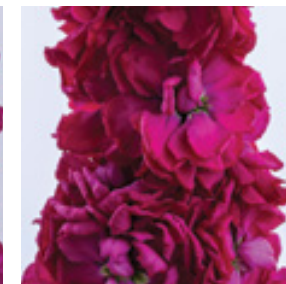
PINK



CRIMSON



RUBY



BLUE



ADDITIONAL COLORS: Light lavender, yellow, Bright Rose, Cherry Blossom and Katz high double White

Stem Height: 81 cm
 Crop Time: 9 weeks from planting to harvest
 Planting Density: 100 plants/m² net

STOCK STANDARD

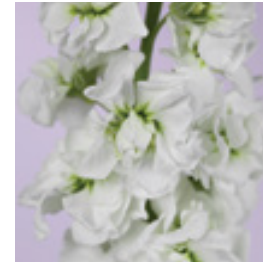
- Single stem florist-types have large double flowers.
- Excellent choice for high-end flower decorations.



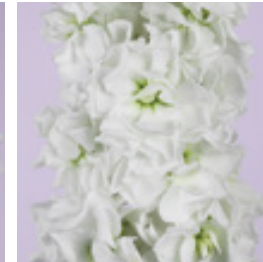
VINTAGE BROWN



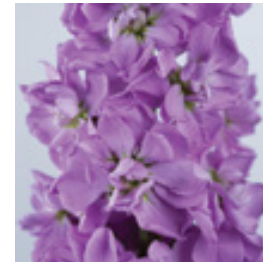
CANNETO WHITE



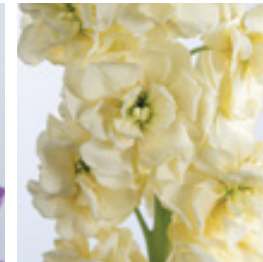
UTA WHITE



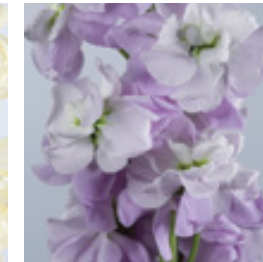
MAI BLUE



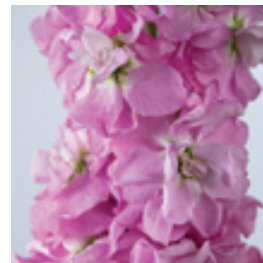
UTA YELLOW



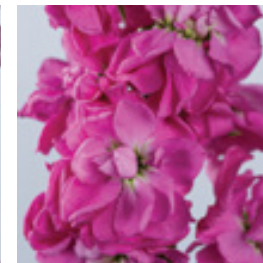
MAI LIGHT BLUE



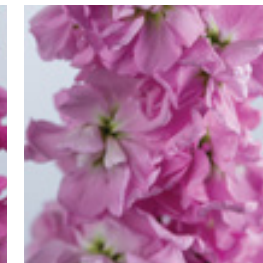
MAI ROSE



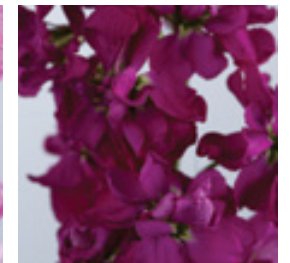
UTA ROSE



UTA LIGHT PINK



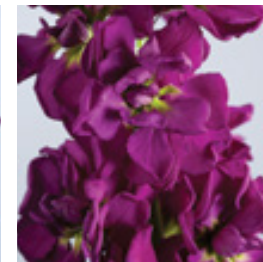
UTA RED



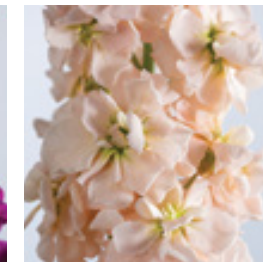
WINE RED



REDDISH PURPLE



MAI APRICOT



MAI PURPLE



Stem Height: >70 cm
 Crop time: 10 weeks from planting to harvest
 Plant Density: 100 plants/m²

Sunflower

Nothing feels more like summer than **Sunflowers!** Native from North America, the old-time favorite is not only named after, but also resembles the sun. It's no surprise that we see these flowers in paintings by renowned artists from around the world. This flower brings and spreads warmth, happiness, power and strength. Always facing the sun, the sunflower seeks positivity and strength since it is always looking towards the bright side. Its vibrant yellow and orange petals always brighten the mood.



JOE

- New Sunflower for BallSB
- Tendstoopen upwards
- Highly productive: low number of petite flowers
- Good for open fields production.
- Perfect for Bouquets.



Stem Height: +150 cm
 Crop Time: 11-12 weeks from planting to harvest
 Planting Density: 50 plants/m²

FULL SUN

- Fully sterile, double rays of orange petals and dark center with 10-12 cm diameter.



new



Stem Height: 19 cm
 Crop Time: 13-15 weeks
 Planting Density: 50 plants/m² net

SUNBRIGHT SERIES

- Performs well under short day and low temperature conditions
- Single-flowered, pollenless type that holds up extremely well in shipping
- Strong neck for upward facing flower head
- Produces x-large flowers under long photoperiods



Stem Height: 80-160 cm
 Crop Time: 7 weeks from planting to harvest
 Planting Density: 50-60 plants/m² net (5-6 plants/ft² net)

SUNRICH SERIES

- Features very uniform flowers heads and plants – the most reliable series in flowers size and crop uniformity
- Chosen by the Van Gogh Museum to be the official Van Gogh sunflowers due to its bright, solid colors
- Very versatile flower provides a cottage look and is a must year-round



Stem Height: 92 cm
 Crop Time: 7 weeks from planting to harvest
 Planting Density: 50-60 plants/m² net (5-6 plants/ft² net)

SUNRICH SUMMER SERIES

- New series from Sunrich: Summer.
- The Sunrich Summer maintains all the characteristics of the Sunrich Series but opens 5 to 10 days faster.
- The series are pollenless, long-lasting, densely petaled and upright facing on strong stem.



Stem Height: 90-150 cm
 Crop Time: 7 weeks from planting to harvest
 Planting Density: 50 plants/m²

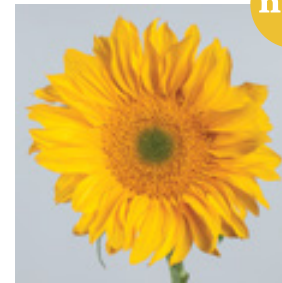
PROCUT SERIES



- Solid petal colors from orange to white to deepest red, or bi-colors.
- ProCut White popular in Spring bouquets, Easter, baptisms and weddings – they can be used year around.
- Unique colors like Bicolor: Mahogany red flowers with orange tips and a dark disc.



GOLD LUX



GOLD LITE



BI COLOR



ORANGE



WHITE NITE



WHITE LITE



RED



Stem Height: 120 cm
 Crop Time: 7 weeks from planting to harvest
 Planting Density: 50-60 plants/m² net (5-6 plants/ft² net)



VINCENT SERIES

- New favorite due to the upward-facing blooms and bountiful overlapping petals
- Also provide abundant and eye-catching color
- Feature the well-loved combo of brown centers and deep orange petals – an excellent choice as a summer and fall flower and for year-round decoration



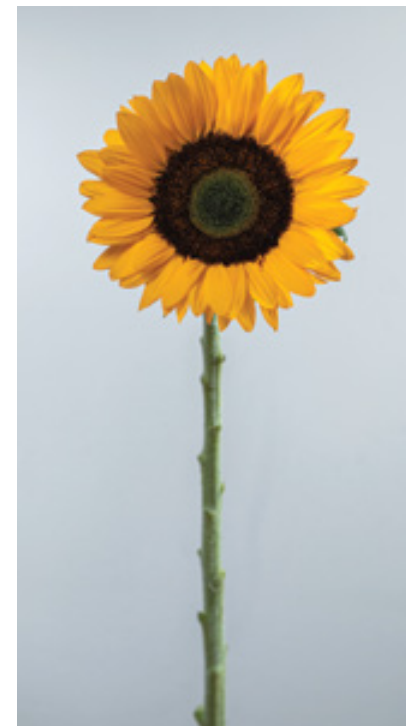
Stem Height: 90 cm
 Crop Time: 8 weeks from planting to harvest
 Planting Density: 50-60 plants/m² net (5-6 plants/ft² net)



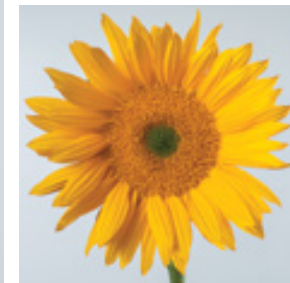
MAX SERIES

- Big flower head with 42 petals.

SUNSHINE MAX



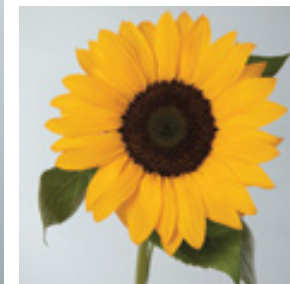
AURORA MAX



RAYO DE SOL



SOLEADO MAX



RINGO MAX



Stem Height: 140-150 cm
 Crop Time: 9 weeks from planting to harvests
 Plants density: 50 plants/m²

ZIGGY

- A long petal Bicolor Yellow – Brown sunflower with a small disk and a double layer of petals.



new

Stem Height: 170 cm
 Crop Time: 9 weeks
 Planting Density: 50 plants/m² net

MARLEY SERIES

- Plum red center color fading to cream at the tips of the petals.



new

Stem Height: +90 cm
 Planting Density: 50 plants/m² net

DOUBLES

- Golden yellow fully double flowers 15 cm blooms.
- Carnival Sun, very resistant to lower temperatures.



new

GOLDY DOUBLE

CARNIVAL SUN



Stem Height: 120-140 cm
Planting Density: 50 plants/m² net

SUN-FILL SERIES

- Often, sunflower backs can be just as beautiful and interesting as the faces. To bring the "sunflower back" look to the forefront, American sunflower breeder Tom Heaton bred two innovative varieties (Sun-Fill Green and Sun-Fill Purple) with highly ornamental sepals that wrap the flower face, creating that look typically only found on the back of the flower.



new

PURPLE

GREEN



Stem Height: 118 cm
Crop Time: 12 weeks
Planting Density: 50- plants/m² net
Head Diameter 8.9 cm

Trachelium

The genus name comes from the Greek word “trachelos” meaning neck. This references the plant’s use in traditional herbal medicine to treat sore throats and other tracheal ailments. This also explains the common name throatwort.

Trachelium plays versatile roles in floral work, working well as a filler in both fresh and dry arrangements. It is especially prized for its interesting texture, umbrella-like shape, full clusters and broad availability in colors. Its flowers also feature a delicate scent, similar to lilac.



TRACHELIUM

- Flowers with strong, vibrant and solid colors
- Long vase life
- Highly productive
- For greenhouse or open fields production
- Perfect for bouquet



LAKE FOREST PURPLE



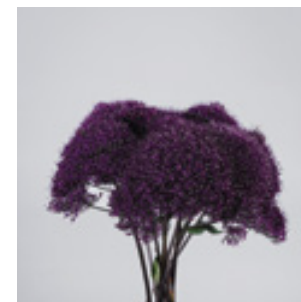
LAKE MICHIGAN PURPLE



LAKE MICHIGAN BLUE



LAKE MICHIGAN VIOLET



LAKE MICHIGAN WHITE



Stem Height: 76-107 cm
 Crop Time: From planting to harvest: 10-18 wks
 Planting Density: 65-86 plants/m²

Tweedia Caerulea

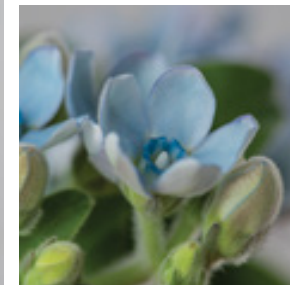
Tweedia was derived from the sur name of James Tweedie whom by the mid of the 19th century was the head gardener of the Royal Botanic Garden in Edinburg. After he immigrated to South America, he would traveled throughout the continent sending the plants that he found back to Scotland. Tweedia is known for its distinctive turquoise blue star-shaped flowers and greenish felted leaves symbolizing peace and harmony. Its five-petaled flowers bloom in loose clusters, which give way to boat-shaped seedpods.

TWEEDIA CAERULEA

- Another true blue flower
- Soft velvety leaves
- Vibrant green stems and leaves that contrast with the vibrant color of the flower
- Distinctive star-shaped flowers perfect for a bridal bouquet, a grooms' boutonniere or in center pieces.



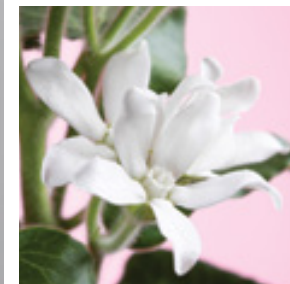
BLUE DOUBLE



PINT WHITE DOUBLE



PURE WHITE



PURE BLUE



Stem Height: 40 – 50 cm
 Crop Time: 16 wks from planting to harvest
 Planting Density: 77 plants/m²

BULBS



Flowering bulbs have can store energy from one growing season to the next. When a bulb starts to grow, it uses these stored reserves to develop roots, shoots, leaves and flowers. Being so self-sufficient means that flower bulbs don't have to wait for perfect weather or ideal soil conditions. By nature, they already have what they need to thrive.



Lilies

Lilies most commonly mean devotion or purity. Because of the Greek myth of Hera and Zeus, lilies are associated with rebirth and motherhood. According to the story, when Zeus wanted baby Hercules to drink the milk from Hera, as she was not the birth mother, she refused. Zeus brought Hercules to Hera to drink her milk while she was sleeping, but she awoke and pushed him away. The drops of milk that spilled on the ground grew into lilies.

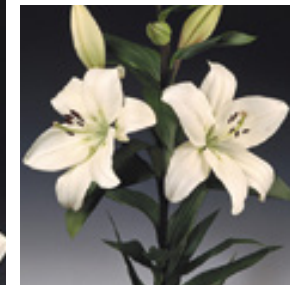


LA SERIES

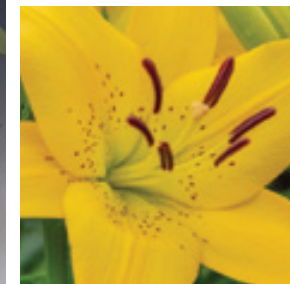
- Hybrid between *L. longiflorum* and Asiatic hybrid
- Upward phasing cup shape flower



LITOUWEN



YELLOW DIAMOND



EREMOS



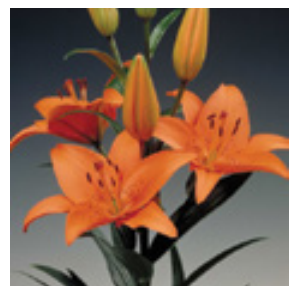
ASIATICO SERIES

- Can reach stem height up to 1.8 m
- Long, thinner and brilliant petals
- No fragrance



BRUNELLO

TRESOR



SPECIFICATION CHART

ALSTROMERIA

SERIE	TAMAÑO DE FLOR	VIDA FLORERO (DIAS)	LARGO DE TALLO	PRODUCTIVIDAD	DENSIDAD DE SIEMBRA PLANTS/M ²
Aura lavender	4.4 cm	14	80-95 cm	medio	3,2
Amancay Tangerine (ZE-142-03)	3,9 cm	14	80-100 cm	alta	3,2
Lucca	N/A	N/A	N/A	N/A	N/A
Amancay Fruit Dragon	7 cm	14	85-90 cm	medium	3.2
Amancay Lychee	6,5 cm	14	80-85 cm	high	3.2
Amancay Red	6,5 cm	14	65-70 cm	medio	3.2

ASTER

SERIE	TAMAÑO DE FLOR	VIDA FLORERO (DIAS)	LARGO DE TALLO	PRODUCTIVIDAD	DENSIDAD DE SIEMBRA PLANTS/M ²
Bonita	4 cm	10	76-90 cm	medio	80
Fujimi/Moto	5 cm	10	76-90 cm	medio	80
Hana	3 cm	10	76-90 cm	bajo	70
Julie	5 cm	10	60 cm	medio	80
Matsumoto	4.0-5.5	10	61-76 cm	medio	80

BRASSICA

SERIE	TAMAÑO DE FLOR	VIDA FLORERO (DIAS)	LARGO DE TALLO	PRODUCTIVIDAD	DENSIDAD DE SIEMBRA PLANTS/M ²
Crane	12 cm	10	70 cm	medio	80
Crane Feather	12 cm	10	60 cm	medio	80
Dream	12 cm	10	70 cm	alta	80
White Lady	12 cm	10	62 cm	alta	80
Flare	12 cm	10	65 cm	alta	80

CAMPANULA

SERIE	TAMAÑO DE FLOR	VIDA FLORERO (DIAS)	LARGO DE TALLO	PRODUCTIVIDAD	DENSIDAD DE SIEMBRA PLANTS/M ²
Campana	13 cm	14	76-86 cm	alta	64
Champion II	13 cm	12	76-101 cm	alta	64

CHRYSANTHEMUM SPRAY

SERIE	TAMAÑO DE FLOR	VIDA FLORERO (DIAS)	LARGO DE TALLO	PRODUCTIVIDAD	DENSIDAD DE SIEMBRA PLANTS/M ²
Daisies	5+ cm	15	70-75 cm	alta	85 a 100
Cushions	5+ cm	15	70-75 cm	alta	85 a 100
Santinis	5+ cm	15	70-75 cm	alta	85 a 100
Novelties	5+ cm	15	70-75 cm	alta	85 a 100

DELPHINIUM

SERIE	TAMAÑO DE FLOR	VIDA FLORERO (DIAS)	LARGO DE TALLO	PRODUCTIVIDAD	DENSIDAD DE SIEMBRA PLANTS/M ²
Ariel	25-30 cm	12 - 14	75 cm	medio	12-14
Guardian	25-30 cm	10 - 12	76-99cm	medio	12-14
Trick	20 cm	12 - 14	60 cm	alta	12-14
Triton	25-30 cm	12 - 14	75 cm	alta	12-14
Waltz	35-40 cm	12 - 14	100 cm	alta	10
Sunshine (Spray)	3.5 cm	12 days	60 cm	medio	10-12

DIANTHUS

SERIE	TAMAÑO DE FLOR	VIDA FLORERO (DIAS)	LARGO DE TALLO	PRODUCTIVIDAD	DENSIDAD DE SIEMBRA PLANTS/M ²
Green Ball ®	8 cm	15-17	50-60 cm	alta	40
Green Ball ® punky	5.5 - 6.5 cm	15-17	50-60 cm	alta	42
Amazon™ Neon Cherry	10 cm	20	46-91 cm	baja	40
Amazon™ Neon Purple	10 cm	20	46-91 cm	alta	40

Amazon™ Rose Magic	10 cm	20	46-91 cm	medio	40
Amazon™ Lavander Magic	10 cm	15	70-80 cm	medio	40
Sweet™ White	7-8 cm	12-14	50-60 cm	alta	80
Sweet™ Pink	8-9 cm	12-14	50-60 cm	alta	80
Sweet™ Pink Magic	6-7 cm	12-14	50-60 cm	alta	80
Sweet™ Deep Pink Maxine	7-8 cm	12-14	50-60 cm	alta	80
Sweet™ Magenta Bicolor	7-8 cm	12-14	50-60 cm	alta	80
Sweet™ Purple White bicolor	6-7 cm	12-14	50-60 cm	medio	80
Sweet™ Coral	6-7 cm	12-14	50-60 cm	alta	80
Sweet™ Scarlet	6-7 cm	12-14	50-60 cm	alta	80
Sweet™ Red	6-7 cm	12-14	50-60 cm	alta	80
Sweet™ Purple	6-7 cm	12-14	50-60 cm	alta	80
Sweet Black™ Cherry	5-6 cm	12-14	50-60 cm	alta	80
Sweet™ Neon Purple	8-9 cm	12-14	50-60 cm	alta	80
Sweet Rose™ Magic	8-9 cm	12-14	50-60 cm	alta	80
Sweet™ Cherry	8-9 cm	12-15	60-70 cm	alta	80

DUSTY MILLER

SERIE	TAMAÑO DE FLOR	VIDA FLORERO (DIAS)	LARGO DE TALLO	PRODUCTIVIDAD	DENSIDAD DE SIEMBRA PLANTS/M ²
Silver Dust	20 cm	10-12	60-70 cm	medio	24
New Look	20 cm	10-12	60-70 cm	medio	24

SUNFLOWER

SERIE	TAMAÑO DE FLOR	VIDA FLORERO (DIAS)	LARGO DE TALLO	PRODUCTIVIDAD	DENSIDAD DE SIEMBRA PLANTS/M ²
ProCut	12-18 cm	14	120 cm	medio	50
Vincent Choice	10 cm	14	90 cm	medio	50
Sunbright	15-18 cm	14	152-182 cm	medio	50
Sunrich	15-18 cm	14	92 cm	medio	50
Sunrich Summer	10.7cm	12	90-150 cm	medio	50
Rayo del Sol	12.5 cm	12	74 cm	medio	50
Zohar	8-9 cm	10	66-75 cm	medio	50
Ziggy	12 cm	10	170 cm	medio	50
Marley	NA	12	90 cm	medio	50
Joe	11.5 - 12.5 cm	12	90 cm	medio	50
Carnival Sun	9 cm	11	90 cm	medio	50
Goldy Double	12 - 14.5 cm	10	120-140 cm	medio	50
Sun Fill	8.9 cm	12	118 cm	medio	50

GYPSOPHILA

SERIE	TAMAÑO DE FLOR	VIDA FLORERO (DIAS)	LARGO DE TALLO	PRODUCTIVIDAD	DENSIDAD DE SIEMBRA PLANTS/M ²
Snowball	1.0 cm	9	80 cm	alta	8-15
Mirabella	0.8 cm	9	80 cm	alta	8-15
Polar Bear	1.1 cm	9	81 cm	alta	8-15

LISIANTHUS

SERIE	TAMAÑO DE FLOR	VIDA FLORERO (DIAS)	LARGO DE TALLO	PRODUCTIVIDAD	DENSIDAD DE SIEMBRA PLANTS/M ²
ABC	8 cm	20	91-114 cm	NA	64-84
Flare	8 cm	20	91-114 cm	NA	64-84

LIMONIUM

SERIE	TAMAÑO DE FLOR	VIDA FLORERO (DIAS)	LARGO DE TALLO	PRODUCTIVIDAD	DENSIDAD DE SIEMBRA PLANTS/M ²
Hybrid Silver Pink	9 cm	12	80 cm	alta	6
Hybrid Shooting Star	9 cm	12	88 cm	medio	6
Hybrid Skylight	9 cm	12	86 cm	alta	6
Sinensis	9 cm	16	80 cm	alta	6
Sinzii Deep Blue	9 cm	16	90 cm	alta	6
Sinzii Silver	9 cm	16	90 cm	alta	6
Sinzii Deep Lavender	9 cm	16	65 cm	medio	6
Sinzii White	10 cm	16	90 cm	alta	6
Sinzii Lilac	11 cm	16	90 cm	alta	6
Sinuata Super Purple	9 cm	16	80 cm	medio	6

MARIGOLD

SERIES	FLOWER SIZE	VASE LIFE (DAYS)	STEM LENGTH	PRODUCTIVITY	DENSITY PLANTS/M ²
Xochi	8-10 cm	7-8	70-90 cm	alta	80
Coco	8-10 cm	7-8	70-90 cm	alta	80

ORNAMENTAL KALE

SERIES	FLOWER SIZE	VASE LIFE (DAYS)	STEM LENGTH	PRODUCTIVITY	DENSITY PLANTS/M ²
Crane	12 cm	10	70 cm	Medium	80
Crane Feather	12 cm	10	60 cm	Medium	80
Dream	12 cm	10	70 cm	High	80
White Lady	12 cm	10	62 cm	High	80
Flare	12 cm	10	65 cm	High	80

SNAPDRAGON

SERIES	FLOWER SIZE	VASE LIFE (DAYS)	STEM LENGTH	PRODUCTIVITY	DENSITY PLANTS/M ²
Potomac / Early	13-15 cm	12-14	100-150 cm	High	88

STOCK

SERIES	FLOWER SIZE	VASE LIFE (DAYS)	STEM LENGTH	PRODUCTIVITY	DENSITY PLANTS/M ²
Chanter	15 cm	12	70 cm	High	88
Iron	15 cm	12	75 cm	High	100
Katz	15 cm	12	81 cm	High	100
Quartet	15 cm	12	60 cm	High	88
Infinity Snow	15 cm	12	60 cm	High	100

OTHER

SERIES	FLOWER SIZE	VASE LIFE (DAYS)	STEM LENGTH	PRODUCTIVITY	DENSITY PLANTS/M ²
Ami Majus	NA	10-12	80 cm	High	12
Bupleureum	NA	NA	91 cm	Medium	66
Carthamus Grenade	5 cm	8	80 cm	Medium	80
Craspedia Billybutton	5 cm	12-15	90 cm	High	21
Dahlias	10-18 cm	5	70-90 cm	Medium	6
Godetia Grace	5-7 cm	8-10	70 cm	Medium	28
Matricaria Vegmo	2-3 cm	11	71-91 cm	High	80
Moluccella	NA	15	38-51 cm	High	80
Panicum Capillare	NA	10-14	61-76 cm	Medium	50
Trachelium Lake Michigan		10-12	70-107 cm	High	28
Trachelium Blue Murex		7	80 cm	Medium	77
Zinnia	8-10 cm	5	55 cm	Medium	77

BallSB

www.ballsb.com
7270 NW 12 St, Suite 580
Miami, Fl 33120
info@ballsb.com

Ball Colombia

Carrera 7 #84a-29 of 1102
Bogota, Colombia
info@ballcolombia.com

Ball Ecuador

Calle Av. Siena 318 Edif. MCS of 204
Quito, Ecuador
info@ballecuador.com

Ball Kenya

PO BOX 764
Naivasha, Kenya
info@ballkenya.com



**COLOR
THE
WORLD.**

www.ballsb.com
info@ballsb.com